



# TASMANIA

TOURISM OPERATOR GUIDE  
FOR TRAVEL TRADE



Looking over The Hazards  
Freycinet National Park  
© Luke O'Brien Photography

## TASMANIA

COME DOWN FOR AIR



# Contents

Welcome to Tasmania	03	Old Kempton Distillery	(A) 20
About Tasmania	04	Par Avion	(T) 21
Apple Isle Wine Tours	(T) 06	Piermont	(H) 21
Above and Beyond Tasmania	(T) 06	Pennicott Wilderness Journeys	(T) 22
Best Western	(H) 07	Port Arthur Historic Site & Cascades Female Factory	(A) 23
Bonorong Wildlife Sanctuary	(A) 07	Premier Travel Tasmania	(T) 23
Bridestowe Lavender Estate	(A) 08	Ship Inn Stanley	(H) 24
Bruny Island Safaris	(T) 08	Southern Sea Ventures	(T) 24
Callington Mill Distillery	(A) 09	Tahune Adventures	(A) 25
Curringa Farm Accommodation and Farm Tours	(T) (H) 09	Tasmanian Nature Company	(T) 25
Day Tours Tasmania	(T) 10	Tasmanian Vacations	(A) (T) (H) 26
Drive Car Hire	(T) 10	Tasmanian Walking Company	(T) 26
Eguide	(T) 11	Tasmanian Wild Seafood Adventures	(T) 27
Experience Tasmania Tours and Charters/Gray Line	(T) 11	Tamar Valley Resort	(H) 27
Federal Group Tasmania	(H) 12	Tassie Tours	(T) 28
Freycinet Experience Walk	(T) 13	The Truffle Farm	(T) (A) 28
Grandveve Cheeses & Hartshorn Distillery	(A) 13	Tours Tasmania	(T) 29
Hadley's Orient Hotel	(H) 14	TasVillas Group	(H) 30
Happy Tassie Travel	(A) 14	The Old Woolstore Apartment Hotel	(H) 30
Intrepid Travel & Edge of the Bay	(T) (A) 15	Under Down Under Tours	(T) 31
Josef Chromy Wines	(A) 16	Unique Charters	(T) 31
Little Beach Co Resort	(A) 16	Vision Hotels	(H) 32
Love Tasmania Tours and Coal River Coaches	(T) 17	West Coast Wilderness Railway	(A) 32
Luxury Golf and Scenic Tours Tasmania	(T) 17	World Heritage Cruises	(A) 33
Miena Village Guiding	(T) 18	Wukalina Walk	(T) 33
McDermott's Coaches	(T) 18		
NRMA Parks and Lodges	(T) (H) 19		
Ocean Dunes	(T) 20		

<b>PRODUCT CATEGORIES</b>	
(H)	Accommodation/Hotel
(A)	Attraction
(T)	Tour

# Products by region

## ↓ South

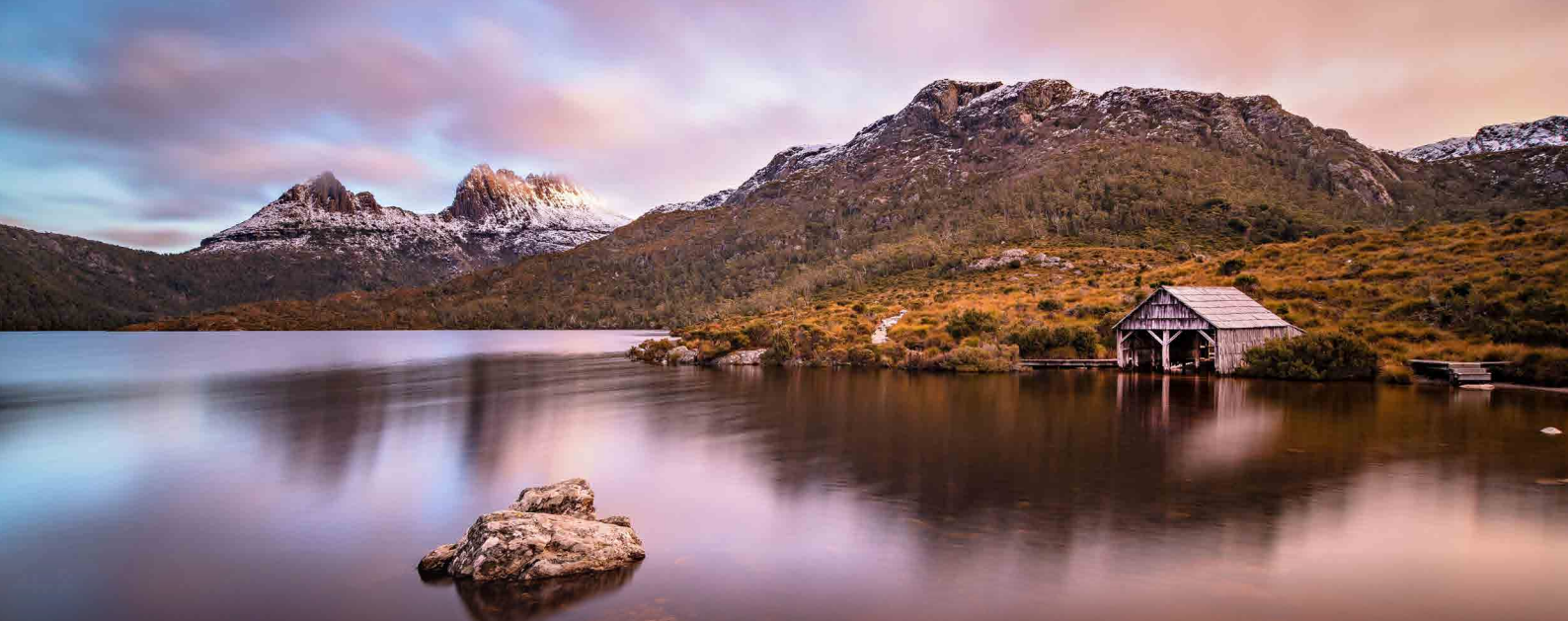
Apple Isle Wine Tours	(T) 06
Above and Beyond Tasmania	(T) 06
Best Western	(H) 07
Bonorong Wildlife Sanctuary	(A) 07
Bruny Island Safaris	(T) 08
Callington Mill Distillery	(A) 09
Curringa Farm Accommodation and Farm Tours	(T) (H) 09
Day Tours Tasmania	(T) 10
Drive Car Hire	(T) 10
Eguide	(T) 11
Experience Tasmania Tours and Charters/Gray Line	(T) 11
Federal Group Tasmania	(H) 12
Grandveve Cheeses & Hartshorn Distillery	(A) 13
Hadley's Orient Hotel	(H) 14
Happy Tassie Travel	(A) 14
Intrepid Travel & Edge of the Bay	(T) (A) 15
Love Tasmania Tours & Coal River Coaches	(T) 17
Luxury Golf and Scenic Tours Tasmania	(T) 17
Miena Village Guiding	(T) 18
McDermott's Coaches	(T) 18
NRMA Parks and Lodges	(T) (H) 19
Old Kempton Distillery	(A) 20
Par Avion	(T) 21
Pennicott Wilderness Journeys	(T) 22
Port Arthur Historic Site & Cascades Female Factory	(A) 23
Premier Travel Tasmania	(T) 23
Southern Sea Ventures	(T) 24
Tahune Adventures	(A) 25
Tasmanian Nature Company	(T) 25
Tasmanian Vacations	(A) (T) (H) 26
Tasmanian Walking Company	(T) 26
Tasmanian Wild Seafood Adventures	(T) 27
Tassie Tours	(T) 28
Tours Tasmania	(T) 29
TasVillas Group	(H) 30
The Old Woolstore Apartment Hotel	(H) 30
Under Down Under Tours	(T) 31
Vision Hotels	(H) 32



## ↑ North

Best Western	(H) 07
Bridestowe Lavender Estate	(A) 08
Day Tours Tasmania	(T) 10
Drive Car Hire	(T) 10
Eguide	(T) 11
Experience Tasmania Tours and Charters/Gray Line	(T) 11
Federal Group Tasmania	(H) 12
Happy Tassie Travel	(A) 14
Intrepid Travel & Edge of the Bay	(T) (A) 15
Josef Chromy Wines	(A) 16
Love Tasmania Tours & Coal River Coaches	(T) 17
Luxury Golf and Scenic Tours Tasmania	(T) 17
McDermott's Coaches	(T) 18
Premier Travel Tasmania	(T) 23
Tasmanian Vacations	(A) (T) (H) 26
Tamar Valley Resort	(H) 27
Tassie Tours	(T) 28
The Truffle Farm	(T) (A) 28
Tours Tasmania	(T) 29
TasVillas Group	(H) 30
Under Down Under Tours	(T) 31
Unique Charters	(T) 31
Vision Hotels	(H) 32

TURN THE PAGE FOR EAST AND WEST →



# Products by region continued

## → East

Day Tours Tasmania	(T) 10
Drive Car Hire	(T) 10
Eguide	(T) 11
Experience Tasmania Tours and Charters/Gray Line	(T) 11
Federal Group Tasmania	(H) 12
Freycinet Experience Walk	(T) 13
Happy Tassie Travel	(A) 14
Intrepid Travel & Edge of the Bay	(T) (A) 15
Little Beach Co Resort	(A) 16
Love Tasmania Tours & Coal River Coaches	(T) 17
Luxury Golf and Scenic Tours Tasmania	(T) 17
McDermott's Coaches	(T) 18
NRMA Parks and Lodges	(T) (H) 19
Par Avion	(T) 21
Piermont	(H) 21
Pennicott Wilderness Journeys	(T) 22
Premier Travel Tasmania	(T) 23
Southern Sea Ventures	(T) 24
Tasmanian Vacations	(A) (T) (H) 26
Tasmanian Walking Company	(T) 26
Tassie Tours	(T) 28
Tours Tasmania	(T) 29
TasVillas Group	(H) 30
Under Down Under Tours	(T) 31
Unique Charters	(T) 31
Wukalina Walk	(T) 33

## ← West / North West

Day Tours Tasmania	(T) 10
Drive Car Hire	(T) 10
Eguide	(T) 11
Experience Tasmania Tours and Charters/Gray Line	(T) 11
Happy Tassie Travel	(A) 14
Intrepid Travel & Edge of the Bay	(T) (A) 15
Love Tasmania Tours & Coal River Coaches	(T) 17
Luxury Golf and Scenic Tours Tasmania	(T) 17
McDermott's Coaches	(T) 18
NRMA Parks and Lodges	(T) (H) 19
Ocean Dunes	(T) 20
Par Avion	(T) 21
Premier Travel Tasmania	(T) 23
Ship Inn Stanley	(H) 24
Tasmanian Vacations	(A) (T) (H) 26
Tasmanian Walking Company	(T) 26
Tassie Tours	(T) 28
Tours Tasmania	(T) 29
TasVillas Group	(H) 30
Under Down Under Tours	(T) 31
Unique Charters	(T) 31
West Coast Wilderness Railway	(A) 32
World Heritage Cruises	(A) 33



# Welcome to Tasmania

We can't wait to share  
our island with you



© Andrew Wilson

—— Australia's most southerly state is no ordinary place. And Tasmanians are no ordinary people. Geographic isolation has contributed to unique biodiversity – globally significant and dazzling in its beauty – and has fostered a community of creative, down-to-earth, resourceful people who make time to make you feel welcome. Seasonality and hospitality go hand in hand. One of the joys of travelling in Tasmania is tasting farm and ocean-fresh produce, along with the ease of meeting the makers at cellar doors, farm gates and local markets.

You'll soon see that when we do things, we like to do them our way. Take our distillers, using native botanicals and, in some cases, leftover machinery to make some of the best spirits in the world. Hop on a ferry to witness an alternative universe of ideas and expression at Mona, a public and provocative private art museum, carved into a headland in the state's south. And join islanders in a packed schedule of events and festivals that celebrate all the good things in life.

More than a third of the island is protected as national parks, reserves and World Heritage areas, and much of it is easily accessible on foot or aboard a cruise. Hike the tallest sea cliffs in the southern hemisphere on the Three Capes Track, and breathe some of the purest air on Earth. Walk in valleys where towering Huon pines grow for thousands of years, where rivers meet rare temperate rainforest, and snowpeaked mountains shadow buttongrass plains.

This is a place for adventure – test yourself on scores of wild mountain-bike trails, tee off on world-class links perched over Bass Strait, cast for wild brown trout in glacial tarns, or visit one of several wildlife sanctuaries to encounter some of our elusive native wildlife.

A journey to Tasmania is a chance to disconnect from the stresses of life, and reconnect with the things that matter.

Come down for air.

**Sarah Clark**

CEO, Tourism Tasmania





03 -



02 -



01 -



Tasman Island  
© Emilie Ristevski

## Where we are

Australia's only island state lies about 250km across the formidable Bass Strait from Victoria. Next stop south is Antarctica, 3000km away. Surrounded by the Tasman Sea, the strait and the mighty Southern Ocean, Tasmanians breathe some of the cleanest air in the world. The 334 islands of the Tasmanian archipelago sit at latitude 42°S, directly in the path of the Roaring Forties winds.

Tasmania is about the same size as the Republic of Ireland: 315km from east to west and 286km from north to south. There are around 569,800 Tasmanians with almost half living in the state capital of Hobart, established in 1804 and Australia's second-oldest city.

AUSTRALIA

Sydney  
Melbourne

TASMANIA





## Weather

Tasmania's four distinct seasons deliver different travel experiences year-round. Average maximum temperatures in summer, from December through February, are 17–23°C (63–73°F). Average maximum winter temperatures, from June through August, are 3–11°C (37–52°F). Enjoy beach life and blooming lavender fields in summer, the 'turning of the fagus' in autumn when Australia's only native deciduous tree turns brilliant colours, fish for wild brown trout in spring, and in winter join solstice festivals and warm up around log fires with fine local whisky.

Rainfall varies significantly across the island. Hobart is the second-driest capital city in Australia (after Adelaide), while the west coast has an annual average rainfall of 2400mm, which sustains the island's cool-temperate rainforests.



## Getting here

From mainland Australia, there are direct domestic flights into Hobart and Launceston from most capital cities. Domestic flights are also available from Melbourne to Devonport, Burnie, King Island and Flinders Island. *Spirit of Tasmania* passenger and vehicle ferries operate daily across Bass Strait between Geelong and Devonport. A direct international flight is available seasonally from Auckland to Hobart, providing a one-stop route for North American visitors.

## Getting around

Tasmania is prime road-trip territory, with diverse landscapes and excellent road coverage – and never more than a few hours between major towns. Visitors can hire cars or vans, bring their own vehicle from mainland Australia on the *Spirit of Tasmania* ferry, or join a coach tour or a small escorted group. There are also intercity and regional public bus services.

## Rainbow accredited businesses



Businesses across the island have undertaken training to create safe spaces for LGBTQIA+ travellers. For a full list of Rainbow Tasmania Tourism

Accredited operators, visit [discovertasmania.com.au/rainbow-accredited](https://discovertasmania.com.au/rainbow-accredited).

## More information

For travel professionals, find sales-focused information and itinerary suggestions at [tassietrade.com.au](https://tassietrade.com.au) or email [trade@tourism.tas.gov.au](mailto:trade@tourism.tas.gov.au)

SEE MORE AT  
[discovertasmania.com.au](https://discovertasmania.com.au)

01 – Cradle Mountain–Lake St Clair National Park © Dearn Bond  
02 – Blue Derby Mountain Bike Trails © Flow Mountain Bike  
03 – Woolnorth Wind Farm © Sean Scott  
04 – Martha Lavinia Beach, King Island © Stu Gibson





## Apple Isle Wine Tours ⓘ

Apple Isle Wine Tours operates full-day, half-day and private tours showcasing Tasmania's award-winning wines, local cuisine and scenic landscapes. Tours can be combined with visits to popular destinations including Mona, Kunanyi/Mount Wellington, Richmond, Huon Valley, Freycinet, Port Arthur or Bruny Island. Additional services include airport transfers, intrastate transport, event transfers and pre-wedding celebrations.

Established in 2003, Apple Isle Wine Tours and Airtas Transfers are privately owned businesses committed to delivering exceptional Tasmanian experiences. Their local expertise and personalised service ensure visitors discover the authentic flavours and attractions that make Tasmania a premier food and wine destination.

### CONTACT INFO:

Justin Davies  
+61 414 430 033  
[bookings@appleislewinetours.com.au](mailto:bookings@appleislewinetours.com.au)  
[appleislewinetours.com.au](http://appleislewinetours.com.au)

## Above and Beyond Tasmania ⓘ

Tasmania's only seaplane experience, offering scenic flights and private charters from Hobart's iconic waterfront. Fly in a multi-award-winning, Tasmanian-owned amphibious Cessna Caravan — capable of taking off and landing on both land and water.

With seating for up to 10 passengers, explore remote and spectacular destinations including Freycinet, Bruny Island, Bathurst Harbour, the Tasman Peninsula, and the Gordon River to name a few.

Custom itineraries and gift vouchers available.

### CONTACT INFO:

Emma Pritchett  
1300 338 303  
[info@aboveandbeyond.flights](mailto:info@aboveandbeyond.flights)  
[aboveandbeyond.flights](http://aboveandbeyond.flights)





## Best Western H

Whether clients are travelling for business or leisure, each property delivers the comfort, convenience, and quality service that define the BWH Hotels experience, making them perfect bases for exploring Tasmania's unique charm and natural beauty.

### Best Western Hobart

Ideally located near the city centre with modern rooms and a restaurant serving local flavours.

### Best Western Plus Launceston

Offering spacious accommodations, onsite dining, and easy access to Tamar Valley wine country.

### Best Western Murchison Lodge Burnie

A tranquil riverside retreat with warm hospitality and close proximity to stunning coastal attractions.

#### CONTACT INFO:

BWH Hotels Sales  
[sales@bwh.com.au](mailto:sales@bwh.com.au)  
[www.bestwestern.com](http://www.bestwestern.com)

## Bonorong Wildlife Sanctuary A

Bonorong Wildlife Sanctuary operates as a social enterprise and wildlife rescue base, housing Tasmania's unique native species including animals unable to return to the wild.

Bonorong operates Tasmania's only wildlife rescue service and hospital, where visitors can observe procedures, learn animal stories and know their contributions directly fund the operation.

The sanctuary offers admission with free daily tours, short animal encounters with native species, feeding experiences ranging from group tours to exclusive private sessions, and seasonal night tours showcasing nocturnal wildlife behaviour.

#### CONTACT INFO:

Matt Clement  
+61 406 097 723  
[info@bonorong.com.au](mailto:info@bonorong.com.au)  
[bonorong.com.au](http://bonorong.com.au)



01 - Best Western Plus Launceston

02 - Best Western Hobart

03 - Tasmanian devil (*Sarcophilus harrisii*) © Luke O'Brien Photography

04 - Bonorong Wildlife Sanctuary © Tourism Australia





## Bridestowe Lavender Estate A

Bridestowe Lavender Estate has been cultivating the world's finest lavender for over 100 years, making it the southern hemisphere's oldest and largest lavender farm. Located 45 minutes from Launceston in Tasmania's beautiful north-east, this iconic destination offers spectacular views, peaceful surroundings and rich agricultural history across 250 hectares.

Visitors can explore seasonal displays of bulbs and deciduous trees, enjoy lavender-inspired café treats, browse unique Australian-made gifts crafted from pure Bridestowe oils, and book personalised farm tours. Open year-round with accessible facilities and ample parking.

### CONTACT INFO:

Kim Weston

+61 408 663 982

[kim@bridestowelavender.com.au](mailto:kim@bridestowelavender.com.au)

[bridestowelavender.com.au](http://bridestowelavender.com.au)



## Bruny Island Safaris T

Bruny Island Safaris has been showcasing the island's breathtaking landscapes, gourmet local produce and rich heritage for over 12 years. Led by Managing Director Craig Parsey, who has personal connections to the area, the company offers exclusive access to Cape Bruny Lighthouse – southern Tasmania's only lighthouse open for public tours.

Their guided experiences highlight Bruny's wildlife, scenic views and artisan food producers, with passionate local guides ensuring authentic and memorable adventures. The tours combine natural beauty with cultural heritage, providing visitors comprehensive access to this unique island destination.

### CONTACT INFO:

Jess Symonds – Global Partnerships & Product

Marketing Coordinator

+61 3 6144 3045

[bookings@brunyislandsafaris.com.au](mailto:bookings@brunyislandsafaris.com.au)

[brunyislandsafaris.com](http://brunyislandsafaris.com)



01 – Bridestowe Lavender Estate © Tourism Tasmania

02 – Bridestowe Lavender Estate © Luke Tscharke

03 – White and natural wallaby, Bruny Island

04 – Bruny Island Lighthouse





## Callington Mill Distillery A

Callington Mill Distillery combines traditional craftsmanship with creative innovation, linking Tasmania's heritage with contemporary whisky-making. Located within a lovingly restored historic precinct featuring one of Australia's oldest tower mills, the distillery offers immersive experiences from barley to barrel.

Visitors can enjoy guided or self-guided tours, sample premium Tasmanian single malt whiskies in the Cellar Door, create personalised whisky blends, and dine at the onsite restaurant featuring fresh local produce. The experience showcases both distilling expertise and Tasmania's rich milling heritage.

### CONTACT INFO:

Rizk Mawass

+61 482 509 019

[info@callingtonmilldistillery.com.au](mailto:info@callingtonmilldistillery.com.au)

[callingtonmilldistillery.com](http://callingtonmilldistillery.com)



## Curringa Farm Accommodation and Farm Tours H T

Sixth-generation farmers Tim and Jane operate a distinctive agritourism experience in central Tasmania, one hour from Hobart. Their nine fully self-contained cottages provide comfortable farm stay accommodation surrounded by nature.

Curringa Farm offers tailored tours for groups of six to 100 visitors, featuring sheep shearing demonstrations, working dog displays, highland cattle, barbecue lunches and locally sourced products. The authentic rural experience attracts luxury travellers, cruise passengers, special interest groups and outdoor enthusiasts. With extensive international hospitality experience, Curringa Farm caters to couples, families and groups seeking genuine Tasmanian farm life.

### CONTACT INFO:

Jane Parsons

+61 418 863 337

[admin@curringafarm.com.au](mailto:admin@curringafarm.com.au)

[curringafarm.com.au](http://curringafarm.com.au)







02 -



03 -



01 -



04 -

## Day Tours Tasmania

Day Tours Tasmania specialises in private and small group tours from Hobart, showcasing southern Tasmania's premier destinations through expertly designed itineraries. Their knowledgeable local guides lead memorable experiences across Bruny Island, Coal River Valley, Turrakana/ Tasman Peninsula including Port Arthur, and the picturesque Huon Valley.

Their tours include behind-the-scenes distillery visits, award-winning wineries, great local food, stunning scenery and fascinating stories from Tasmania's past. Each trip captures what makes Tasmania special, mixing excellent food and wine with natural beauty and local history for an authentic southern Tasmanian adventure.

### CONTACT INFO:

Jess Symonds - Global Partnerships  
& Product Marketing Coordinator  
+61 3 6144 3045

[info@daytourstasmania.com](mailto:info@daytourstasmania.com)  
[daytourstasmania.com](http://daytourstasmania.com)

## Drive Car Hire

Drive Car Hire has been Tasmania's premier self-drive specialist for four decades, combining professionalism and efficiency with genuine Tasmanian hospitality. Their comprehensive fleet includes standard, premium and sports vehicles, with personalised service extending from remote area delivery to bespoke experience curation.

Guests can enjoy complimentary hotel delivery, expert itinerary guidance and local recommendations to enhance their Tasmanian exploration. As Tasmania's first rental operator to embrace electric vehicles, Drive leads sustainable tourism through ongoing investment in hybrid and low-emission vehicles, demonstrating their commitment to reducing environmental impact while facilitating memorable self-drive adventures.

### CONTACT INFO:

Anna Donovan  
+61 (3) 6231 1641  
[anna@drivecarhire.com.au](mailto:anna@drivecarhire.com.au)  
[drivecarhire.com.au](http://drivecarhire.com.au)

01 - Apple pie and cider

02 - Hobart Whisky Tour

03 - Tesla at Tasman National Park Lookout © Drive Car Hire

04 - Tasman Hotel, Drive Car Hire © Tourism Australia





## Eguide

Eguide provides premium tours and transfers with 100% carbon-offset operations, leading Tasmania's sustainable tourism sector. Their modern fleet accommodates individuals and groups of any size, delivering comfortable travel experiences across single-day and multi-day bespoke itineraries.

Specialising in Japanese traveller services, Eguide offers guided nature, cultural and technical tours including agricultural business visits with Japanese-speaking guides. As a leading shore excursion operator for Hobart, Burnie and Port Arthur, they create personalised cruise passenger experiences. Eguide combines environmental responsibility with exceptional service, showcasing Tasmania's natural beauty, cultural heritage and attractions.

### CONTACT INFO:

David Hearle  
+61 438 730 204  
[david@eguide.com.au](mailto:david@eguide.com.au)  
[eguide.com.au](http://eguide.com.au)

## Experience Tasmania Tours and Charters/Gray Line

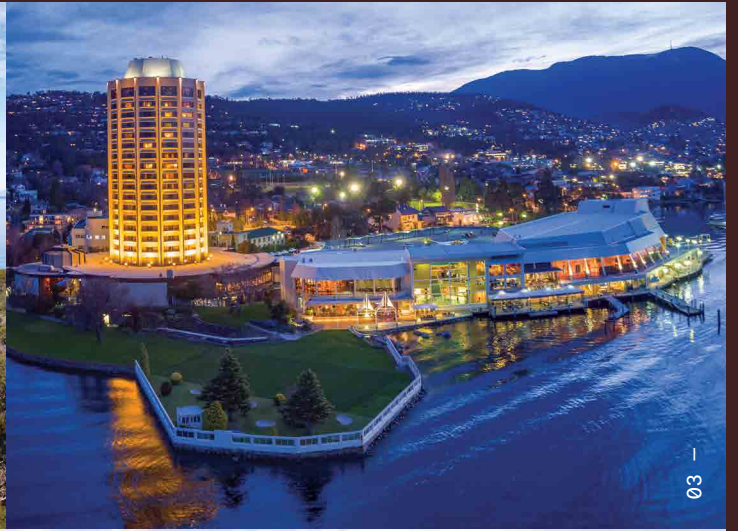
Experience Tasmania Gray Line offers Tasmania's most comprehensive range of quality sightseeing day tours, featuring regularly scheduled itineraries covering iconic attractions. Their professional team combines efficiency, knowledge and passion to deliver safe, enjoyable Tasmanian journeys with highly trained drivers and guides.

The modern fleet accommodates groups from four to 57 passengers, available for private touring statewide with expert itinerary planning assistance. Agent logins provide convenient booking access with instant confirmation, while well-timed schedules ensure clients experience Tasmania's best attractions through professionally managed, reliable tour operations.

### CONTACT INFO:

Fiona Russell  
+61 417 341 826  
[info@experiencetas.com.au](mailto:info@experiencetas.com.au)  
[experiencetas.com.au](http://experiencetas.com.au)  
[grayline.com.au](http://grayline.com.au)





## Federal Group Tasmania

### Wrest Point Tasmania

### The Henry Jones Art Hotel

### MACq 01

### Country Club Tasmania

### Country Club Villas

### Saffire Freycinet

#### HOBART:

##### Wrest Point Tasmania

Waterfront entertainment destination featuring casino, dining, bars, accommodation and conference facilities with harbour views. Wrest Point is the place to indulge your playful side.

##### The Henry Jones Art Hotel

Australia's first dedicated art hotel housed in reimagined 19th-century waterfront warehouses. The Henry Jones features 52 individually designed rooms and 4 suites showcasing Tasmanian artists throughout, with heritage features, sandstone walls and harbour views.

#### MACq 01

Australia's first storytelling hotel, located in the historic Hobart waterfront. Offering 114 rooms and suites with generous floorplans, the property features engaging Tasmanian history throughout the property and signature Hidden Hobart Storytelling Tours.

#### LAUNCESTON:

##### Country Club Tasmania and Country Club Villas

Self-contained resort complex with 1-3 bedroom options. Facilities include championship 18-hole golf course, indoor pool, tennis courts, spa, fitness centre and children's playground. The perfect base for touring Launceston & Northern Tasmania.

#### EAST COAST:

##### Saffire Freycinet

Premier luxury lodge in Coles Bay Conservation Area overlooking Freycinet Peninsula, famed for the iconic Wineglass Bay, delivering sophisticated intimate experiences within breathtaking natural surroundings.

#### CONTACT INFO:

Nathan McMeekin  
+61 (3) 6225 7070

[trade@federalgroup.com.au](mailto:trade@federalgroup.com.au)  
[federalgroup.com.au](http://federalgroup.com.au)





## Freycinet Experience Walk

Freycinet Experience Walk operates within one of Tasmania's oldest national parks, delivering a premium four-day adventure combining comfort with exploration. Professional nature guides lead guests by foot, boat and bus across the entire Freycinet Peninsula coastline, including iconic Wineglass Bay, returning each evening to a private sanctuary.

This all-inclusive experience showcases authentic Tasmanian flavours alongside natural beauty. Season extensions include winter products and luxury camping options, with familiarisation opportunities for industry partners, demonstrating their commitment to year-round access to Tasmania's spectacular wilderness and coastline.

### CONTACT INFO:

Josephine Turner  
+61 (3) 6223 7565  
1800 506 003  
[walk@freycinet.com.au](mailto:walk@freycinet.com.au)  
[freycinet.com.au](http://freycinet.com.au)



## Grandvewe Cheeses & Hartshorn Distillery

Ewenique Tasting House delivers Tasmania's premier cheese and spirit experience within a working farmhouse sheep cheesery and distillery. Since 2002, this family operation has grown from Grandvewe Cheeses to include Hartshorn Distillery, which transforms cheesemaking whey into award-winning vodka, and ewe care skincare products from surplus sheep milk.

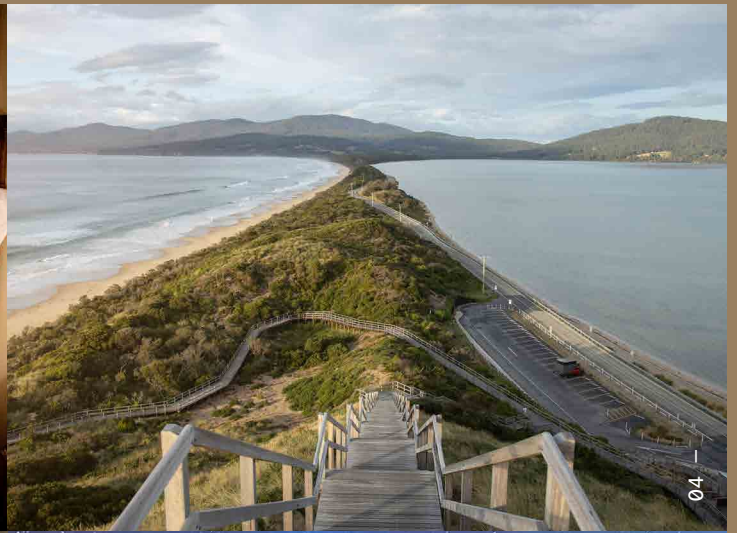
The immersive tasting experience connects visitors to the land through hands-on farmhouse activities, engaging all senses while showcasing sustainable practices. Guests leave with genuine sense of the land, understanding the family's journey and Tasmania's extraordinary rural environment.

### CONTACT INFO:

Nicole Gilliver  
+61 427 768 456  
[nicole@grandvewe.com.au](mailto:nicole@grandvewe.com.au)  
[Grandvewe.com.au/visit-us](http://Grandvewe.com.au/visit-us)  
[hartshorndistillery.com.au/visit-us](http://hartshorndistillery.com.au/visit-us)







## Hadley's Orient Hotel

Established in 1834, Hadley's Orient Hotel is Tasmania's oldest continuously operating boutique hotel, offering 4.5-star Victorian-era accommodation in central Hobart. Located moments from the CBD and a short walk to the waterfront and Salamanca Place, this heritage icon features beautifully restored period details and onsite gallery.

Unique experiences include traditional afternoon tea, the immersive Trail of Terrific Tales audio tour, and exceptional art throughout. The Orient Bar and Restaurant showcases exquisite Tasmanian products, creating an unparalleled blend of history, hospitality and local culture.

### CONTACT INFO:

Nick Harrison  
+61 400 965 510  
[sales@oldwoolstore.com.au](mailto:sales@oldwoolstore.com.au)  
[hadleyshotel.com.au](http://hadleyshotel.com.au)



## Happy Tassie Travel

Established in 2005, Happy Tassie Travel was Tasmania's first tour operator offering Chinese-speaking services. Their local guides provide tours in Mandarin, Cantonese and English, with charter services available using general coaches and luxury vehicles.

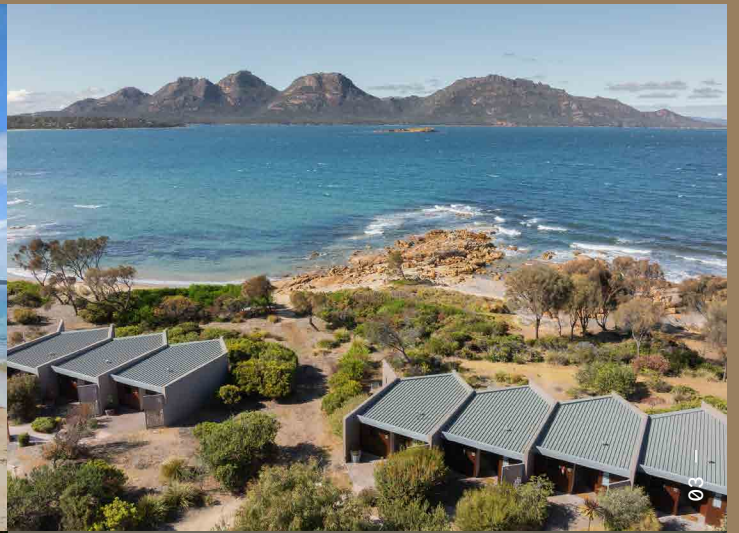
The company offers specialised itineraries designed for Chinese visitors, plus complimentary consultations with local travel experts to create personalised individual and small group travel plans. With nearly two decades of experience serving Chinese-speaking travellers, Happy Tassie Travel prioritises customer satisfaction through culturally tailored Tasmanian experiences.

### CONTACT INFO:

Peter Pan  
+61 (3) 6223 3894  
[booking@htas.com.au](mailto:booking@htas.com.au)  
[htas.com.au](http://htas.com.au)

01 - Hadleys Orient Hotel  
02 - Hadley's Orient Hotel @ Alistair Bett  
03 - Accommodation, Hadley's Orient Hotel 04 - Aurora Australis  
04 - Bruny Island Neck @ Jess Bonde  
05 - Aurora Australis





## Intrepid Travel

Intrepid Travel has been a world leader in responsible travel for 35 years. The company's mission is to create positive change through the joy of travel, which comes to life on their 9 small group trips. Intrepid's own destination management company in Tasmania shares their unique expertise on adventures that are all designed to truly experience local culture.

From trekking the Cradle Mountain Overland Track and walking to Wineglass Bay's best vantage points, to spending 9 days tucking into regional delights with comfy hotel stays or chilling at Intrepid's Edge of the Bay retreat – your clients will treasure Tassie, Intrepid-style.

### CONTACT INFO:

Melissa Andrews  
1300 149 284

[intrepidtravel.com/au/contact-us](https://intrepidtravel.com/au/contact-us)  
[intrepidtravel.com/au](https://intrepidtravel.com/au)

## Edge of the Bay

Edge of the Bay is Intrepid's newest accommodation venture and it's a beauty. Located on the East Coast, the sweeping 27-acre waterfront wonderland is one of the most spectacular addresses in Coles Bay.

Stay steps from three private beaches in Ocean View Studios or enjoy fully self-contained 2 Bedroom Vintage Chalets tucked in a bush setting.

Take in the jaw-dropping views across Oyster Bay to the pink granite mountains of the Freycinet Peninsula. Guests enjoy free use of facilities, including tennis courts, kayaks and bikes. Plus, there's an onsite bar and restaurant, serving up the region's most delicious local produce.

### CONTACT INFO:

Isaac Fear, Manager  
+61 (3) 6257 0102

[reservations@edgeofthebay.com.au](mailto:reservations@edgeofthebay.com.au)  
[edgeofthebay.com.au](https://edgeofthebay.com.au)





## Josef Chromy Wines A

Josef Chromy Estate is a northern Tasmania essential, located 20 minutes from Launceston city centre and 10 minutes from the airport. Visitors can enjoy casual wine and platters in the garden or comprehensive tasting and dining packages.

The "Let's Do Lunch" experience combines 30-minute wine tastings with two-course meals featuring matched wines in their hatted restaurant. "Go Behind the Label" includes estate tours, guided tastings and matched wine lunches, while "The Art of Sparkling" offers hands-on sparkling wine creation through liqueur d'expedition dosage trials, allowing guests to craft their own personalised bottle.

### CONTACT INFO:

Lani Flett  
+61 (3) 6335 8700  
[wine@josefchromy.com.au](mailto:wine@josefchromy.com.au)  
[josefchromy.com.au](http://josefchromy.com.au)



## Little Beach Co Resort H

Little Beach Co Resort is an eco-conscious luxury sanctuary on Tasmania's pristine east coast at secluded Chain of Lagoons. With 400 metres of coastal frontage featuring rockpools, kelp forest and ocean-view sauna, the resort sits within a 22-acre eco-reserve home to wallabies, wombats and rare swift parrots.

Sustainability drives everything from locally sourced rammed earth and Tasmanian hardwood construction to solar energy, rainwater collection and organic waste composting. The luxury accommodation includes eco-friendly domes, hot-tub villas and thermally efficient residences with solar-heated pools, offering wildlife watching and coastal experiences. Suitable for independent travel or small groups.

### CONTACT INFO:

Lynne Wilton  
+61 418 157 222  
[admin@littlebeachco.com.au](mailto:admin@littlebeachco.com.au)  
[littlebeachco.com.au](http://littlebeachco.com.au)







## Love Tasmania Tours and Coal River Coaches T

Love Tasmania Tours & Coal River Coaches provides competitive coach charter, transfers and self-drive options with custom itineraries catering to diverse interests. Their professional, personable drivers prioritise comfort and safety across a well-maintained fleet ranging from cars to large coaches.

With statewide access, the company accommodates both custom and pre-planned itineraries, ensuring exploration of Tasmania's hidden gems and popular attractions. Their flexible approach and comprehensive vehicle options deliver memorable experiences for all guests, promising unforgettable journeys across Tasmania's diverse landscapes and destinations.

### CONTACT INFO:

Laura Oestreich  
+61 (3) 6272 2645  
[laura@lovetasmaniatours.com.au](mailto:laura@lovetasmaniatours.com.au)

Rebecca O'Malley  
+61 (3) 6272 2645  
[rebecca@lovetasmaniatours.com.au](mailto:rebecca@lovetasmaniatours.com.au)  
[lovetasmaniatours.com.au](http://lovetasmaniatours.com.au)

## Luxury Golf and Scenic Tours Tasmania T

Luxury Golf & Scenic Tours Tasmania delivers unforgettable journeys across the island's diverse landscapes in premium vehicles. Guests experience renowned golf courses including Cape Wickham and Barnbougle, while savouring exceptional cool-climate Tasmanian wines celebrated globally for their quality.

With the prestigious Seven Mile Beach golf course set to further elevate Tasmania's golfing reputation, the experienced team curates bespoke adventures combining luxury travel with world-class golf and wine experiences. From rugged coastlines to lush hinterlands, each journey offers discovery through Tasmania's premium golf and scenic destinations.

### CONTACT INFO:

Adam House  
+ 61 499 057 642  
[info@luxurytourstas.com.au](mailto:info@luxurytourstas.com.au)  
[luxurytourstas.com.au](http://luxurytourstas.com.au)

01 – Love Tasmania Tours  
02 – Love Tasmania Tours  
03 – Luxury Golf & Scenic Tours Tasmania © Tourism Australia  
04 – Luxury Golf & Scenic Tours Tasmania © Tourism Australia





## Miena Village Guiding ⓘ

Miena Village Guiding operates from the southern end of Great Lake in Tasmania's Central Highlands, offering fully supported walking experiences across the Central Highlands, Western Lakes and Walls of Jerusalem National Park. Their services include single-day and multi-day trips plus guided fishing in the Central Plateau Conservation Region.

Guests immerse themselves in spectacular glaciated landscapes featuring extensive highland lake networks, trout-filled lagoons, pine-lined tarns and crystal-clear streams. The experienced team delivers unforgettable experiences in this unique high-country environment, combining outdoor adventure with expert local knowledge.

### CONTACT INFO:

Jason Garrett  
+61 408 838 753  
[jason@mienavillage.com.au](mailto:jason@mienavillage.com.au)  
[mienavillageguiding.com.au](http://mienavillageguiding.com.au)



## McDermott's Coaches ⓘ

McDermotts Coach Group is a family-owned company with over 40 years' experience leading Tasmania's tourism industry. Recent Tasmanian Tourism Awards gold medallists and national finalists, they provide unparalleled coach touring services using premium Australian-built coaches and quality staff.

Specialising in executive touring for groups, McDermotts offers authentic local perspectives on Tasmania through experienced guides. They also operate year-round services in iconic Cradle Mountain National Park, providing day tours, short tours, hiking experiences and transport services, combining industry expertise with genuine Tasmanian hospitality and knowledge.

### CONTACT INFO:

Kim Woolley  
+61 400 247 182  
[kim@mcdermotts.com.au](mailto:kim@mcdermotts.com.au)  
[mcdermotts.com.au](http://mcdermotts.com.au)





## NRMA Parks and Lodges H T

### Cradle Mountain Hotel

### Gordon River Cruises

### Strahan Village

### Freycinet Lodge

NRMA Parks and Lodges operates four premium accommodation and experience venues across Tasmania.

#### Cradle Mountain Hotel

Alpine woodland retreat in Tasmania's north-west highlands offering the perfect West-coast escape. Features split-level king rooms, deluxe spa rooms with quality artwork and furnishings, plus welcoming reception and entrance areas.

#### Gordon River Cruises

Daily wilderness cruises into the UNESCO Tasmanian Wilderness World Heritage Area from Strahan, connecting visitors with the history of Tasmania's rugged west coast and world-unique wilderness. Features the hybrid vessel Spirit of the Wild with premium food and beverage offerings and modern cruise terminal facilities. Evening dinner cruises, special events and captain's private tours available. Three-time Tasmanian Tourism Award winner and Hall of Fame inductee.

### Strahan Village

Collection of 3-4½ star rooms and cottages on the Tasmanian Wilderness World Heritage Area edge. Accommodation ranges from rustic waterfront cottages to spacious harbour-view rooms with private balconies. Facilities include Hamer's Bar and Bistro and The Kitchen dining venue.

### Freycinet Lodge

Award-winning luxury ecolodge in Freycinet National Park with over 10 state and national awards, including 2018 World Architecture Awards finalist recognition. Accommodation includes Coastal Pavilions, Mountain Terrace rooms, Lodge King rooms, Premier Spa cabins, and Bushland Cabins. Additional services include in-house massage, Flavours of East Coast Experience, e-bikes, Dinner by the Bay and romance packages.

### CONTACT INFO:

Gina Figallo

+61 492 443 063

[Gina.Figallo@nrmaparks.com.au](mailto:Gina.Figallo@nrmaparks.com.au)

[mynrma.com.au/travel/expeditions](http://mynrma.com.au/travel/expeditions)

01 - Looking across at Strahan Village © Jason Futrill

02 - Freycinet Lodge © Tourism Tasmania

03 - Cradle Mountain Hotel © Tourism Tasmania

04 - Gordon River Cruises © Tourism Australia





## Ocean Dunes T

Ocean Dunes offers pure links golf on King Island's west coast, fronting the Southern Ocean with 2 kilometres of majestic coastline. Fashioned after Scotland's great links courses, the 18-hole layout features crashing waves on ocean-side holes, undulating dunes, heroic tee shots and two signature par-three holes crossing Bass Strait, presenting a uniquely Tasmanian skill test.

Located five minutes from Currie airport and township, Ocean Dunes complements Cape Wickham to make King Island part of Australia's top five public access courses. The clubhouse offers ocean views, with new luxury on-site accommodation opening in 2026, creating the ultimate golf getaway destination.

### CONTACT INFO:

Russell Mitchell  
+61 438 993 768  
[russell@oceandunes.com.au](mailto:russell@oceandunes.com.au)  
[oceandunes.com.au](http://oceandunes.com.au)



## Old Kempton Distillery A

Old Kempton Distillery started in 2012 on Plenty Highway before relocating to the charming town of Kempton, where we've truly become part of the community. Your clients can explore our heritage-listed building while discovering local history, sample our extensive range of Tasmanian spirits, sip cocktails, and enjoy our café featuring local Tasmanian produce.

Open seven days and welcome everyone – including events, families, campers, and dogs in our spacious courtyard. With our cosy cask lounge for fireside tastings and comprehensive dining packages, there's something special for every client at Tasmania's premier artisan distillery.

### CONTACT INFO:

Erin Cole  
+61 (3) 6259 3082  
[erin@oldkemptondistillery.com.au](mailto:erin@oldkemptondistillery.com.au)  
[oldkemptondistillery.com.au](http://oldkemptondistillery.com.au)







02 -



03 -



01 -



04 -

## Par Avion

Par Avion offers exclusive flights to Tasmania's most spectacular and remote locations, including Melaleuca in the Tasmanian Wilderness World Heritage Area, where they operate the only wilderness camp within the national park.

They cater to individual travellers and groups with scenic flight tours from half-day adventures to bespoke charters. Clients can enjoy memorable experience to iconic destinations such as Maria Island, Freycinet National Park and the Gordon River. With over 30 years exploring Tasmania by air, their experienced team ensures every scenic adventure becomes unforgettable.

### CONTACT INFO:

Shannon Wells  
+61 (3) 6248 5390  
[s.wells@paravion.com.au](mailto:s.wells@paravion.com.au)  
[paravion.com.au](http://paravion.com.au)

## Piermont

Piermont offers an exclusive waterfront retreat on Tasmania's east coast, featuring nine architecturally designed two- and three-bedroom residences built in 2019. These contemporary accommodations blend European heritage with natural coastal beauty. Designed for "the curious, the cultured, the escapist and the wanderer," guests enjoy exclusive access to 230 acres featuring tennis court, pool, kayaks, walking trails, private beaches and the award-winning Homestead Restaurant showcasing Tasmania's finest produce.

### CONTACT INFO:

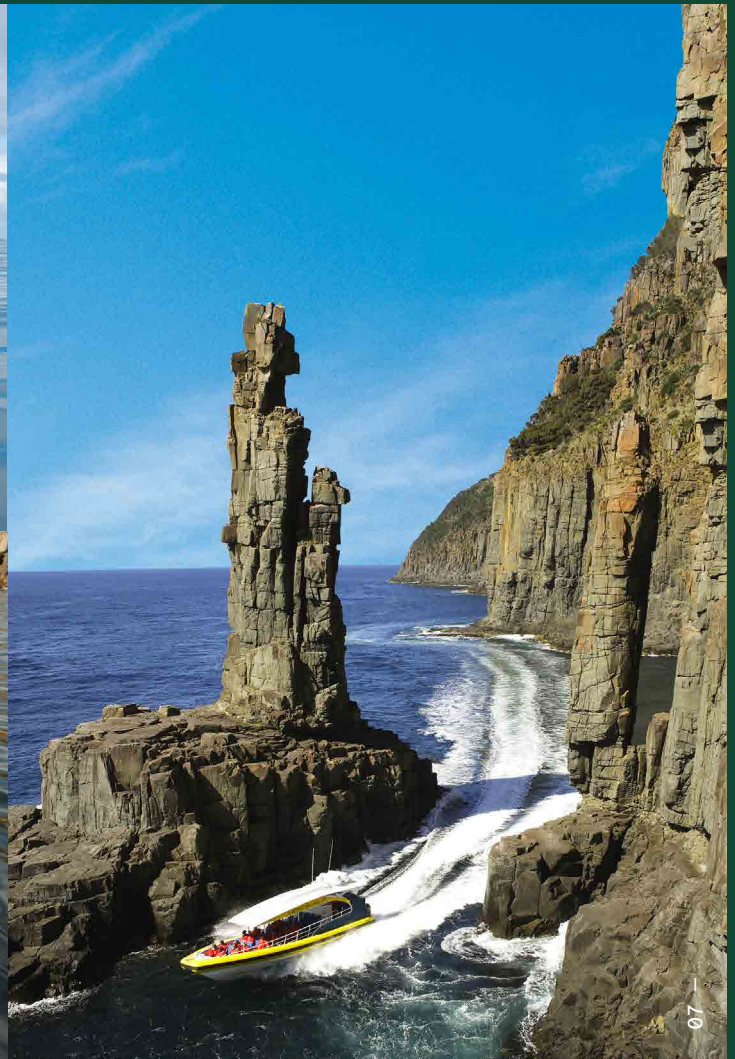
Stacey Kirkby  
+61 487 399 225  
[enquiries@piermont.com.au](mailto:enquiries@piermont.com.au)  
[piermont.com.au](http://piermont.com.au)



01 - Southwest Wilderness @ Par Avion  
02 - Southwest Wilderness @ Matt Glastonbury  
03 - Piermont residence  
04 - Piermont residence

05 - Tasmanian Seafood Seduction, Pennicott Wilderness Journeys  
06 - Bruny Island Cruises, Pennicott Wilderness Journeys  
@ Joe Shemesh  
07 - Bruny Island Cruises, Pennicott Wilderness Journeys  
08 - Wineglass Bay Cruises, Pennicott Wilderness Journeys





## Pennicott Wilderness Journeys ⓘ

Pennicott Wilderness Journeys has been delivering ecotours in Tasmania since 1999. Winner of 15 Australian Tourism Awards, we showcase Tasmania's unique coastal wilderness and wildlife with daily tours from Bruny Island, Port Arthur, Hobart and Coles Bay. Experiences include:

### **Bruny Island and Tasman Island Cruises**

Travellers explore the spectacular coastlines and enjoy close encounters with wildlife.

### **Iron Pot Cruises**

2.5 hour cruise exploring Hobart's waterways, see Australia's oldest lighthouse.

### **Tasmanian Seafood Seduction**

A full day cruise from Hobart gathering and feasting on fresh seafood.

### **Wineglass Bay Cruises**

A 4.5hour cruise of the Freycinet Peninsula, including iconic Wineglass Bay.

### **Bruny Island Traveller**

A land-based food tour, departing Hobart, exploring the island's natural landscapes and artisan produce.

### **Cape Raoul Cruises**

A 90min tour from Port Arthur to Cape Raoul.

### **Freycinet Aqua Express**

Aquatic coastal transfers for the fastest and easiest way to Wineglass Bay

### **CONTACT INFO:**

Melinda Anderson

+61 (3) 6234 4270

[marketing@pennicottjourneys.com.au](mailto:marketing@pennicottjourneys.com.au)

[pennicottjourneys.com.au](http://pennicottjourneys.com.au)







## Port Arthur Historic Site & Cascades Female Factory <sup>A</sup>

Hobart's Cascades Female Factory Historic Site uncovers moving stories of convict women and children, interwoven with palawa (Tasmanian Aboriginal) narratives from the early 1800s through expert storytelling experiences. World Heritage-listed Port Arthur Historic Site brings Australia's convict history to life with world-class interpretation, guided tours and ghost tour experiences.

Group catering options, fine dining, after-dark packages and exclusive VIP experiences including the Wheel of Fate combining two-course meals and exclusive access to Port Arthur's buildings.

### CONTACT INFO:

Iain Chalmers  
+61 (3) 6251 2317  
[Iain.Chalmers@portarthur.org.au](mailto:Iain.Chalmers@portarthur.org.au)  
[femalefactory.org.au](http://femalefactory.org.au)  
[portarthur.org.au](http://portarthur.org.au)



## Premier Travel Tasmania <sup>T</sup>

Premier Travel Tasmania offers private, scheduled small-group (maximum eight guests) and self-drive tours focusing on nature, history and culture across Tasmania.

Their comprehensive offerings include specialised themed departures, tours in multiple languages (German, Spanish, French, Dutch, English), multiday small-group experiences with refined itineraries, stargazing/aurora-watching adventures, and two to five-hour Hobart walking tours with tastings.

Recognised as a sustainable tourism operator and featured in Tourism Australia's Signature Experiences as part of their curated Australian Wildlife Journeys portfolio.

### CONTACT INFO:

Daniel Schoedler & Sylvie Schoedler  
+61 (3) 6231 4214  
[travel@premiertasmania.com](mailto:travel@premiertasmania.com)  
[premiertraveltasmania.com](http://premiertraveltasmania.com)





## Ship Inn Stanley

Ship Inn Stanley offers multi-award-winning 4½-star adults-only accommodation featuring seven ensuite rooms and two deluxe apartments. Combining vintage seafaring elements with modern luxury amenities, guests enjoy over an acre of landscaped gardens and a communal lounge in a converted 1900s Billiard Hall.

At the base of the Nut in Stanley, Ship Inn is perfectly positioned for exploring takayna/Tarkine and north-west Tasmania, this historic gem provides authentic Tasmanian hospitality including complimentary muscat tastings, creating unparalleled experiences for romantic retreats, getaways and adventure-filled escapes.

### CONTACT INFO:

Kerry Houston  
+61 439 749 140

[hello@shipinnstanley.com.au](mailto:hello@shipinnstanley.com.au)  
[shipinnstanley.com.au](http://shipinnstanley.com.au)



## Southern Sea Ventures

Southern Sea Ventures has provided unparalleled coastal and oceanic experiences for over three decades, specialising in transformative kayaking adventures that offer new perspectives on the natural world.

Their globally renowned multi-day excursions cater to diverse preferences and skill levels, from luxurious lodge-based escapades on Bruny Island and Turrakana/Tasman Peninsula to exhilarating camping expeditions in Freycinet National Park.

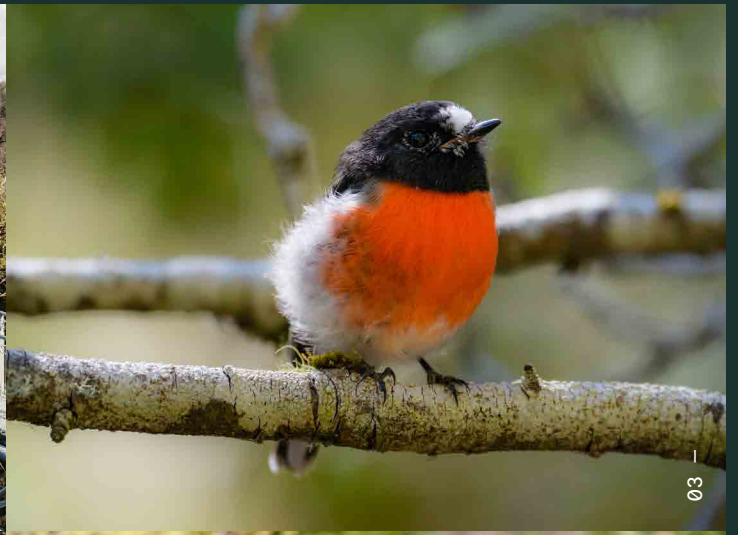
These dynamic journeys seamlessly blend adventure, environmental immersion, marine encounters and finest Tasmanian culinary delights through kayaking, hiking and exploration in breathtaking settings.

### CONTACT INFO:

Toby Story  
+61 419 127 046

[toby@southernseaventures.com](mailto:toby@southernseaventures.com)  
[southernseaventures.com/tasmania/](http://southernseaventures.com/tasmania/)





## Tahune Adventures A

Tahune Adventures offers an elevated wilderness experience featuring the spectacular 600-metre Airwalk, with its cantilevered section suspended 50 metres above the Huon River confluence.

Located 80 minutes south of Hobart in Tasmania's pristine southwest forest, this accessible attraction accommodates all fitness levels through gentle forest walks, Swinging Bridge access, and breathtaking Tasmanian Wilderness World Heritage Area views.

Additional adventures include Eagle Hang Glider zipline flights and Twin River Rafting experiences, complemented by onsite cafe, visitor centre, and accommodation options from eight-bedroom lodge to camping facilities.

### CONTACT INFO:

Melita Hickling  
+61 (3) 6251 3903  
[melita.hickling@tahuneadventures.com.au](mailto:melita.hickling@tahuneadventures.com.au)  
[tahuneadventures.com.au](http://tahuneadventures.com.au)



## Tasmanian Nature Company T

The Tasmanian Devil Unzoo leads sustainable wildlife tourism through world-first "wildlife without cages" experiences, offering unforgettable face-to-face encounters with native Tasmanian animals.

Located one hour from Hobart near Port Arthur, tours accommodate large and small groups through guided nature walks and 4WD tours. Additional offerings include tailored private wildlife tours, after-dark experiences, and half-day nature excursions.

With French, Spanish and German information pamphlets enhancing international appeal, the Unzoo provides authentic wildlife encounters in Tasmania's pristine south-eastern wilderness.

### CONTACT INFO:

Rochelle Abel  
+61 457 403 796  
[marketing@tasmaniannaturecompany.com.au](mailto:marketing@tasmaniannaturecompany.com.au)  
[tasmaniandevilunzoo.com.au](http://tasmaniandevilunzoo.com.au)



01 - Huon Pine Walk @ Tahune Adventures  
02 - Tahune Airwalk @ Tahune Adventures  
03 - Flame Robin @ Tasmanian Devil Unzoo  
04 - Tasmanian devil @ Tasmanian Devil Unzoo





## Tasmanian Vacations ATH

Tasmanian Vacations is a long-established, locally owned specialist travel company based in Hobart, with passionate Tasmanian experts curating unforgettable holiday experiences.

Their comprehensive offerings include self-drive touring with expansive accommodation options, car rental, tours and attractions, promoting over 170 local tourism businesses. Services encompass group travel, private touring, special interest experiences including golf, wineries, whisky and multiday walks, plus campervan rentals and Spirit of Tasmania bookings.

This trusted one-stop shop provides complete Tasmanian holiday planning through experienced local expertise.

### CONTACT INFO:

Ian Rankine  
+61 (3) 6234 4666  
1300 827 822 (within Australia)  
[holidays@tasvacations.com](mailto:holidays@tasvacations.com)  
[tasvacations.com](http://tasvacations.com)

## Tasmanian Walking Company T

Tasmanian Walking Company offers fully guided multiday walking experiences within the Tasmanian Wilderness World Heritage Area and state's premier national parks.

Their comprehensive three to six-day guided walks include food, wine, accommodation, permits and national park passes, featuring signature experiences like Cradle Mountain Huts Walk, Bay of Fires Lodge Walk, Wineglass Bay Sail Walk and Three Capes Lodge Walk.

Additional itineraries include Bruny Island Long Weekend and Tasman Long Weekend, showcasing 30 kilometers across Cape Raoul and Cape Hauy, creating unforgettable journeys perfect for international markets and extended holidays.

### CONTACT INFO:

Jacki Yeend  
+61 433 555 631  
[jacki@taswalkingco.com.au](mailto:jacki@taswalkingco.com.au)  
[taswalkingco.com.au](http://taswalkingco.com.au)

01 - St Columba Falls © Emilie Ristevski  
02 - Trial Harbour © Paul Fleming  
03 - Bay of Fires Lodge-Spa © Tasmanian Walking Company  
04 - Three Capes Track, Cape Pillar and the Blade  
© Tasmania Parks and Wildlife Service





## Tasmanian Wild Seafood Adventures

Tasmanian Wild Seafood Adventures invites clients to meet producers of delicacies enjoyed globally through immersive oceanic experiences.

The Deep to Dish seafood cruise showcases seven species, including two harvested fresh from the ocean by a commercial diver during the tour.

The Sea the Sky night cruise offers a 2-hour exploration of Tasmania's connections with water and sky, departing just south of Hobart with opportunities to view starry skies and potential aurora displays.

Both premium experiences operate aboard a state-of-the-art power catamaran.

### CONTACT INFO:

Julie Mann

+61 458 797 947

[info@tasmanianwildseafoodadventures.com.au](mailto:info@tasmanianwildseafoodadventures.com.au)

[tasmanianwildseafoodadventures.com.au](http://tasmanianwildseafoodadventures.com.au)

## Tamar Valley Resort

This Swiss-village-inspired resort spans 150 acres in the heart of Tamar Valley, just 15 minutes north of Launceston. Featuring 97 accommodations including hotel rooms, villas and self-catering chalets, the resort offers comprehensive facilities with golf course, minigolf, indoor pool, spa, sauna and gym.

Additional amenities include floodlit tennis and basketball courts, plus Wi-Fi access throughout all guest rooms, creating an enhanced experience for leisure travellers, families and groups seeking authentic Tasmanian hospitality in a picturesque valley setting.

### CONTACT INFO:

Damien Pinkerton

+61 (3) 6330 0400

[damien@tamarvalleyresort.com.au](mailto:damien@tamarvalleyresort.com.au)

[tamarvalleyresort.com.au](http://tamarvalleyresort.com.au)



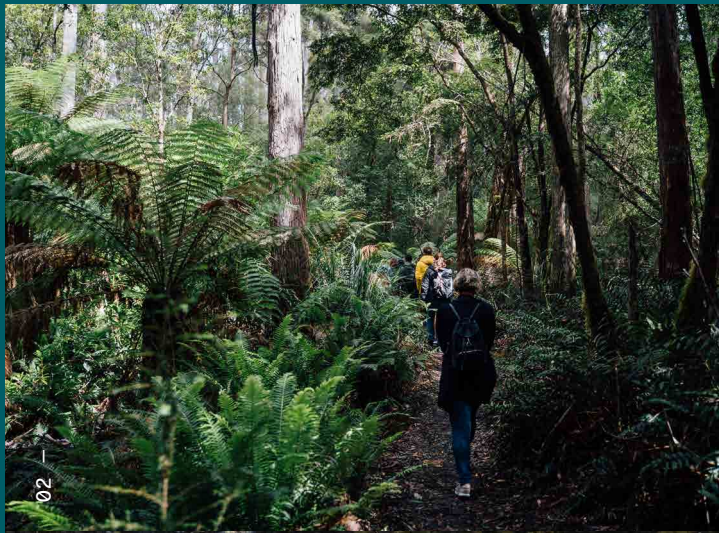
01 - Tasmanian Wild Seafood Adventures

02 - Tasmanian Wild Seafood Adventures

03 - Tamar Valley Resort @ Dan Fellow

04 - Splash Golf Grindelwald @ Jess Bonde





## Tassie Tours T

Tassie Tours is a family-owned business with over 10 years' experience showcasing Tasmania's best through passionate local guides eager to share their wealth of knowledge.

Offering flexible day tours from Hobart and all-inclusive multi-day packages for individuals or larger groups, they create unique itineraries and competitive packages tailored to client requirements.

Specialising in food and wine trails, adventure, luxury and budget experiences, Tassie Tours provides exhilarating tailored adventures with extensive coverage across the entire state, ensuring endless possibilities for authentic Tasmanian exploration.

### CONTACT INFO:

Patrick Bass  
+61 409 404 337  
[info@tassietours.com](mailto:info@tassietours.com)  
[tassietours.com](http://tassietours.com)

## The Truffle Farm T A

The Truffle Farm Tasmania is the 'home of Australia's first black truffle,' producing both summer and winter truffles 10 months of the year.

This hands-on immersive experience features active truffle hunting in the plantation with expert truffle dogs and handlers, where clients join the hunt to uncover treasures while discovering the pioneering history from the Terry family.

The adventure concludes with decadent gourmet lunch or snacks featuring freshly shaved truffles, signature fresh truffle ice cream, and tastings of gourmet truffle products, creating magical culinary memories.

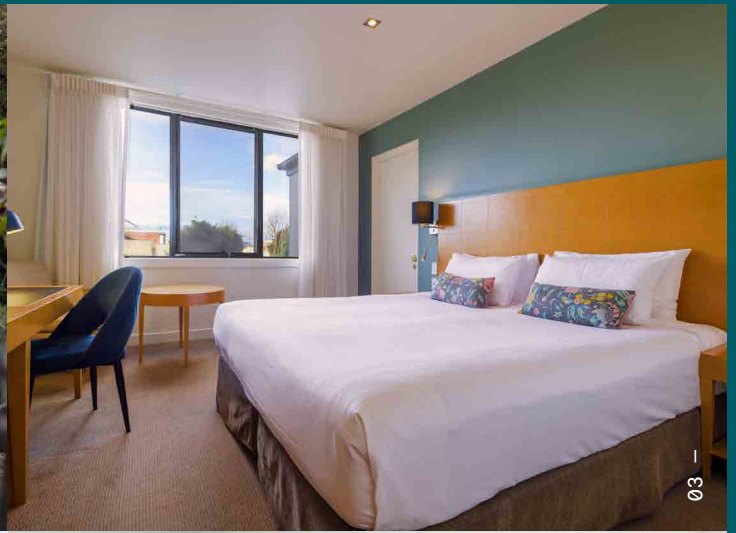
### CONTACT INFO:

Anna Terry  
+61 437 849 283  
[hello@thetrufflefarmtasmania.com.au](mailto:hello@thetrufflefarmtasmania.com.au)  
[thetrufflefarmtasmania.com.au](http://thetrufflefarmtasmania.com.au)



01 - Bay of Fires  
02 - Tahune Adventures  
03 - Anna Terry, The Truffle Farm  
04 - The Truffle Farm





## Tours Tasmania T

Tours Tasmania operates small-group Active Day Tours and BIG 3 Tasmania experiences, featuring action-packed itineraries with amazing short walks through world-class National Parks.

Professional tour guides provide entertaining, informative commentary and guided walks showcasing Tasmania's finest nature, wildlife and sightseeing experiences.

Available from Hobart and Launceston, tours can be linked together creating comprehensive itineraries for travellers of all ages and demographics seeking unique, iconic Tasmanian discoveries through shared exploration experiences.

### CONTACT INFO:

Jen Winn  
+61 (3) 6231 5390  
[bookings@tourstas.com.au](mailto:bookings@tourstas.com.au)  
[tourstas.com.au](http://tourstas.com.au)

## TasVillas Group H

TasVillas Group is Tasmania's largest state-wide accommodation group and one-stop booking service, operating for almost 40 years as a locally owned company providing quality accommodation at convenient locations.

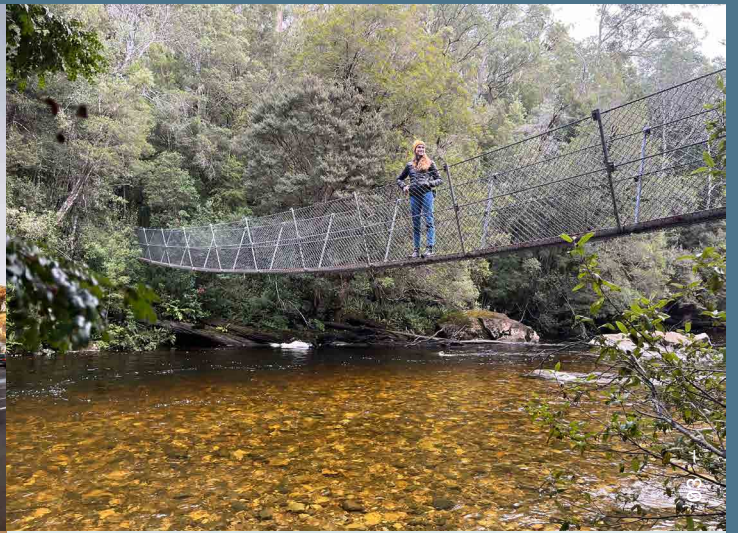
Specialising in touring holidays, accommodation options range from budget motels to deluxe hotels and self-contained apartments. Popular accommodation passes offer set rates for three or more nights with no minimum stay requirements.

Expert staff provide local knowledge and planning advice, tailoring personalised packages to suit client style and budget for unforgettable Tasmanian holiday experiences.

### CONTACT INFO:

Kathryn Summers  
+ 61 438 233 916 or +61 (3) 634 43 222  
[res@tasvillas.com](mailto:res@tasvillas.com)  
[tasvillas.com](http://tasvillas.com)





## The Old Woolstore Apartment Hotel H

Hobart's Old Woolstore Apartment Hotel offers versatile 4½-star accommodation ranging from hotel rooms to three-bedroom apartments.

With 24-hour services including reception, room service, security and onsite carpark, The Old Woolstore is perfect for the self-drive market. The property features Stockmans Restaurant and Baaa Bar to energise visitors for their next adventure.

Mountain bike services are available including bike washdown stations, secure lock-up facilities, and consumables available at reception including tubes, CO<sup>2</sup> canisters and puncture-repair kits, catering to cycling enthusiasts exploring Tasmania.

### CONTACT INFO:

Nick Harrison  
+61 400 965 510  
[bdm@oldwoolstore.com.au](mailto:bdm@oldwoolstore.com.au)  
[oldwoolstore.com.au](http://oldwoolstore.com.au)



## Under Down Under Tours T

Under Down Under offers small group journeys throughout Tasmania, established in 1996 as a locally owned tour operator based in Hobart.

Their active multiday tours focus on experiencing Tasmania's outstanding national parks, history, wildlife and main attractions through year-round advanced eco-certified experiences.

Catering to small groups, couples and solo travellers, clients can select from comprehensive itineraries ranging five to 10 days with accommodation choices including budget, mid-range or dedicated comfort-style options, ensuring authentic Tasmanian adventures tailored to diverse preferences and travel styles.

### CONTACT INFO:

Narelle Webber  
+61 (3) 6232 4800  
[info@underdownunder.com.au](mailto:info@underdownunder.com.au)  
[underdownunder.com.au](http://underdownunder.com.au)

01 – The Old Woolstore Apartment Hotel  
02 – The Old Woolstore Suite  
03 – Tahune Adventures  
04 – Bay of Fires





## Unique Charters T

Unique Charters is a premier helicopter and destination tour company offering exclusive aerial and culinary experiences for adventurous travellers throughout Tasmania.

Their privately curated helicopter experiences showcase stunning landscapes while visiting beautiful locations, dining at award-winning restaurants, enjoying local wines and unique aerial perspectives.

Specialising in bespoke helicopter adventures, Unique Charters creates unforgettable journeys combining Tasmania's breathtaking scenery with exceptional gastronomic experiences.

### CONTACT INFO:

Peter Barron

+61 477 406 450

[uniquecharters@flindersislandaviation.com](mailto:uniquecharters@flindersislandaviation.com)

[uniquecharters.com.au](http://uniquecharters.com.au)

01 - Tahune Adventures

02 - Bay of Fires

03 - Allurity Hotel reception, Hobart

04 - Vision Hotel, queen room @ Tourism Australia

## Vision Hotels H

Vision Hotels operates four distinctive properties across Tasmania, offering diverse accommodation experiences from vibrant city locations to historic waterfront settings.

**Allurity Hotel** Located in the Hobart CBD's dining precinct and offers Hobart's most alluring hotel experience.

**Fox and Hounds Historic Hotel** A traditional Tudor style property located in Port Arthur, superbly situated on a beautiful waterfront and in bush surrounds.

**The Grand Hotel** An icon of affordable luxury and ideally located in downtown Launceston, adjacent to the beautiful City Park.

**The Coachhouse** Perfectly located in a quiet and prestigious area of central Launceston providing both business and leisure travellers with convenient access to many local points of interest.

### CONTACT INFO:

Simon Way

+61 410 788 484

[sales@visionhotels.com.au](mailto:sales@visionhotels.com.au)

[visionhotels.com.au](http://visionhotels.com.au)





## West Coast Wilderness Railway

Original heritage locomotives take guests on unique heritage journeys featuring romance of authentic train experiences with onboard guides sharing stories of communities that lived deep in wilderness during the early 20th century.

Departing Queenstown and Strahan on Tasmania's west coast, journeys range from 1.5–2.5 hours through wilderness and cultural heritage sites. Guests disembark at remote stations to marvel at historical tenacity while enjoying exclusive passenger experiences.

Choose from comfortable Heritage Carriages or first-class Wilderness Carriage featuring light meal service and balcony access.

### CONTACT INFO:

Gemma Poke  
+61 419 644 630  
[sales@wcwr.com.au](mailto:sales@wcwr.com.au)  
[wcwr.com.au](http://wcwr.com.au)



## World Heritage Cruises

Family-owned World Heritage Cruises offer daily journeys through Tasmania's spectacular World Heritage-listed Wilderness, exploring majestic Macquarie Harbour and notorious Hells Gates while venturing to isolated Sarah Island.

Guests glide the serene Gordon River waters hearing stories from five generations of local history.

The comprehensive experience includes expert commentary, onshore walks, delicious lunch featuring fresh Tasmanian produce prepared onboard, and an educational sawmill visit, creating authentic connections with Tasmania's wilderness heritage and pioneering past.

### CONTACT INFO:

Bella Hart  
+61 400 424 244  
[Bella@worldheritagecruises.com.au](mailto:Bella@worldheritagecruises.com.au)  
[worldheritagecruises.com.au](http://worldheritagecruises.com.au)







## wukalina Walk

wukalina Walk is a palawa (Tasmanian Aboriginal) owned and operated four-day/three-night guided journey across cultural homeland, immersing guests in authentic palawa history and culture.

Accommodation includes two nights at a standing camp within the national park near Wukalina/ Mount William, plus one night in lighthouse keepers' cottage at Larapuna / Bay of Fires are. All meals, beverages, transfers, gear, guides and activities are included in this comprehensive cultural experience.

Departing Launceston each Sunday between September and April, this unique walk offers profound connections with Tasmania's indigenous heritage.

### CONTACT INFO:

Brett Mansell  
+61 434 609 992  
[admin@wukalinawalk.com.au](mailto:admin@wukalinawalk.com.au)

Melissa West  
+61 473 149 982  
[Melissa@wukalinawalk.com.au](mailto:Melissa@wukalinawalk.com.au)  
[wukalinawalk.com.au](http://wukalinawalk.com.au)







© STATE OF TASMANIA

tasmap

www.tasmap.tas.gov.au



塔斯马尼亚旅游局官方微信

#discovertasmania

fb.com/tasmania

@tasmania

塔斯马尼亚旅游局官博

discovertasmania.com.au

TASMANIA

COME DOWN FOR AIR

